

JAZZ ENSEMBLE AUDITION MUSIC

SCALE (CONCERT B \flat BLUES)

A ROCK $\text{♩} = 116-120$
B \flat 7

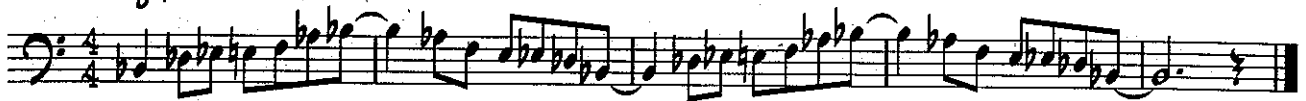
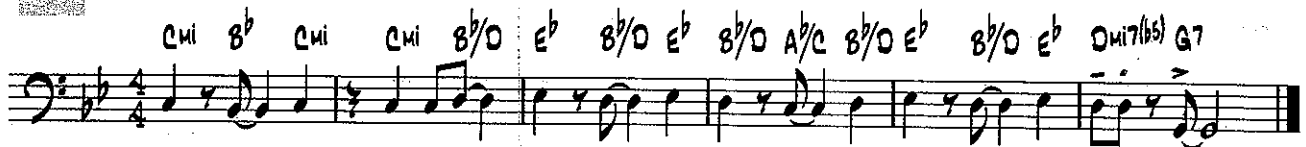


CHART EXCERPTS

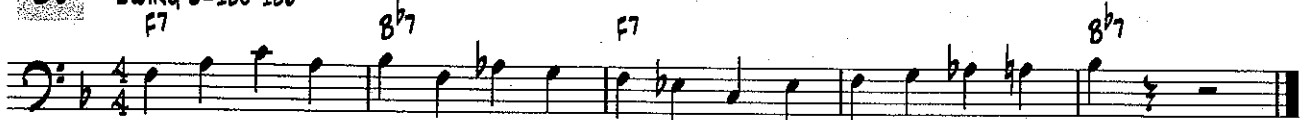
B1 ROCK $\text{♩} = 120-126$



B2 BOSSA $\text{♩} = 116-120$

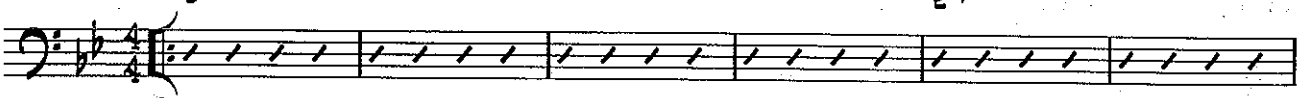


B3 SWING $\text{♩} = 120-126$



IMPROVISATION (optional)

C ROCK $\text{♩} = 116-120$
B \flat 7



- For this excerpt, use track 9 of the RHYTHM STUDIES & IMPROVISATION STUDIES CD attached to the inside back cover of the *Standard of Excellence Jazz Ensemble Method Director Score*. Listen to the solo you hear the 1st time through. Improvise the 2nd, 3rd, and 4th times through using the solo you heard as a model. The notes of the blues scale at the top of this page (Excerpt **A**) are good pitches to use when improvising.

SIGHTREADING

- Director will choose excerpt at audition.

SUGAR PLUM SWING

BASS

By Peter Tchaikovsky
Arranged by Mike Story (ASCAP)

BRIGHT SWING ♩ = 148

1 **f**

9

6 7 8 **mf** 10

11 12 13 14 15 **mf**

17

16 18 19 **mf** 20

25

21 22 23 24 **mf**

26 27 28 29 30 **mf**

33

31 32 34 35 **f**

36 37 38 39 40 **mf**

f

41 **f** 42 43 44 45 **mf**

(49)

46 47 48 50

To CODA

51 52 53 54 55

(57)

56 58 59 60

61 62 63 64

(65)

66 67 68

D.S. ~~S~~ AL CODA

69 70 71 72

⊕ CODA

(74)

73 75 76

77 78 79 80 81

(82)

83 84 85 86

87 88 89 90 91