

Jazz Band Audition Sheet

Horn in F

1) Scales 116-120



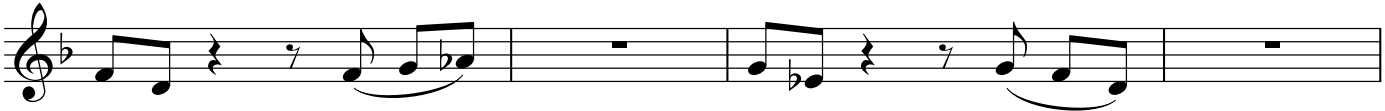
6 2) Rock 128-134



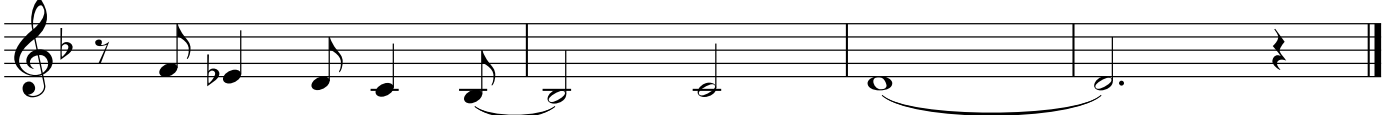
11 3) Bossa 116-120



17 1) Swing 172-200



21



*Numbers are metronome markings

SUGAR PLUM SWING

HORN IN F
(DOUBLES 1ST TROMBONE)

By Peter Tchaikovsky
Arranged by Mike Story (ASCAP)

BRIGHT SWING ♩ = 148

Musical score for Horn in F (Doubling 1st Trombone) for 'Sugar Plum Swing'. The score is written in treble clef with a key signature of one flat (Bb) and a common time signature (C). The tempo is marked 'BRIGHT SWING' with a quarter note equal to 148 beats per minute. The score consists of 11 staves of music, with measure numbers 1 through 36 indicated below the notes. The music features a variety of rhythmic patterns, including eighth and sixteenth notes, and rests. There are several dynamic markings, including *mf* and *mp*, and articulation marks such as accents (^) and slurs. The score ends with a double bar line and a repeat sign.

Musical staff 1, measures 37-40. Treble clef, key signature of one flat. Measure 37 has a whole rest. Measures 38-39 contain quarter notes. Measure 40 has a quarter note with an accent (^).

Musical staff 2, measures 41-46. Treble clef, key signature of one flat. Measure 41 has a whole rest. Measure 42 has a whole rest. Measure 43 has a double bar line with a '2' above it. Measure 44 has a whole rest. Measure 45 has a quarter note with a mezzo-forte (mf) dynamic marking. Measure 46 has a quarter note with an accent (^).

Musical staff 3, measures 47-51. Treble clef, key signature of one flat. Measure 47 has a quarter note. Measure 48 has a quarter note with a sharp sign (#). Measure 49 has a quarter note with a forte (f) dynamic marking. Measure 50 has a quarter note with a forte (f) dynamic marking. Measure 51 has a quarter note with an accent (^).

Musical staff 4, measures 52-56. Treble clef, key signature of one flat. Measure 52 has a quarter note with a forte (f) dynamic marking. Measure 53 has a quarter note with a forte (f) dynamic marking. Measure 54 has a quarter note. Measure 55 has a quarter note. Measure 56 has a quarter note with an accent (^).

Musical staff 5, measures 63-67. Treble clef, key signature of one flat. Measure 63 has a quarter note with a mezzo-forte (mf) dynamic marking. Measure 64 has a quarter note with an accent (^). Measure 65 has a quarter note with a mezzo-forte (mf) dynamic marking. Measure 66 has a quarter note with an accent (^). Measure 67 has a quarter note with an accent (^).

Musical staff 6, measures 68-72. Treble clef, key signature of one flat. Measure 68 has a quarter note with an accent (^). Measure 69 has a quarter note with an accent (^). Measure 70 has a quarter note with an accent (^). Measure 71 has a quarter note with an accent (^). Measure 72 has a quarter note with an accent (^).

Musical staff 7, measures 73-76. Treble clef, key signature of one flat. Measure 73 has a quarter note with an accent (^). Measure 74 has a quarter note with a forte (f) dynamic marking. Measure 75 has a quarter note with a forte (f) dynamic marking. Measure 76 has a quarter note with a forte (f) dynamic marking.

Musical staff 8, measures 77-80. Treble clef, key signature of one flat. Measure 77 has a quarter note. Measure 78 has a quarter note. Measure 79 has a quarter note. Measure 80 has a quarter note with an accent (^).

Musical staff 9, measures 81-85. Treble clef, key signature of one flat. Measure 81 has a quarter note with an accent (^). Measure 82 has a quarter note with an accent (^). Measure 83 has a quarter note with an accent (^). Measure 84 has a quarter note with an accent (^). Measure 85 has a quarter note with an accent (^).

Musical staff 10, measures 86-91. Treble clef, key signature of one flat. Measure 86 has a quarter note. Measure 87 has a quarter note. Measure 88 has a quarter note. Measure 89 has a quarter note with an accent (^). Measure 90 has a quarter note with an accent (^). Measure 91 has a quarter note with an accent (^).