

JAZZ ENSEMBLE AUDITION MUSIC

SCALE (CONCERT B \flat BLUES)

A ROCK $\text{♩} = 116-120$



CHART EXCERPTS

B1 ROCK $\text{♩} = 128-134$



B2 SWING BALLAD $\text{♩} = 120-126$

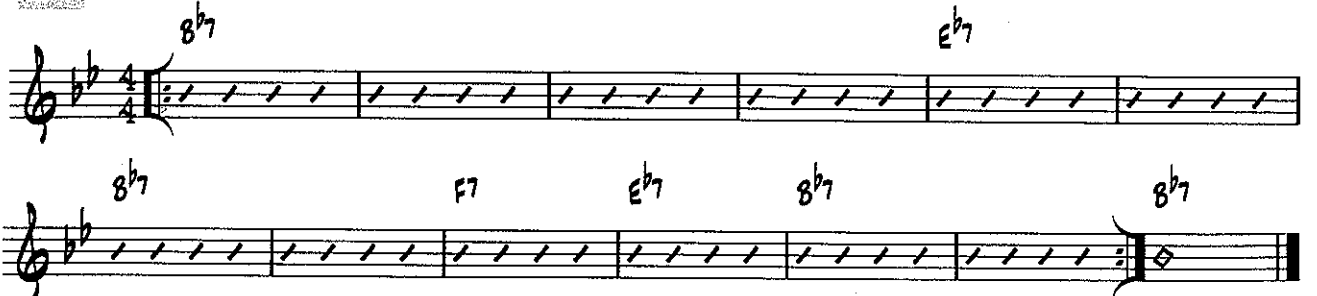


B3 BOSSA $\text{♩} = 116-120$



IMPROVISATION (optional)

C ROCK $\text{♩} = 116-120$



- ▶ For this excerpt, use track 9 of the RHYTHM STUDIES & IMPROVISATION STUDIES CD attached to the inside back cover of the *Standard of Excellence Jazz Ensemble Method Director Score*. Listen to the solo you hear the 1st time through. Improvise the 2nd, 3rd, and 4th times through using the solo you heard as a model. The notes of the blues scale at the top of this page (Excerpt **A**) are good pitches to use when improvising.

SIGHTREADING

- ▶ Director will choose excerpt at audition.

WHO LET THE ELVES OUT?

Based on "Good King Wenceslas"

14

GUITAR/BELLS

TRADITIONAL
Arranged by VICTOR LOPEZ

MODERATE ROCK ♩ = 120

GUITAR
N.C.

1 2 3

4 5 BELLS 6 GUITAR. 7 8 9 10 11

12 13 14 15 16 17 18 19 20 21 22 23 24 25

26 27 28 29 30 31 32 33

TO CODA

Chord symbols: N.C., F, Dmi, C, F, Bb, C, Bb, F, Bb, C7, Gmi, F, C, F, C, Dmi, Bb, F, Bb, C7, F, Bb, C, Dmi, C, F, Bb, F, C7, Dmi, Bb, F.

BELLS 84

85 86 87

GIITAR

38 (OPEN FOR SOLOS)

F7

39 SIM. 40 41 42 8b7

mf

46

43 44 F7 45 C7 8b7 47 C7

48 8b7 49 Ab7 8b7 50 F7 51 52 53

54

(OPT. VOCALS)

55 56 57

WHO LET THE ELVES OUT? OOH! AH! WHO LET THE ELVES OUT? OOH! AH!

58

59 60 61

BELLS 62

63 64 65 66

GIITAR

D.S. AL CODA

COODA

67 F7 Eb7 68 F7 69 Eb7 70 F7 71 F7 Eb7 F7

1. 2. 3. 4.

PART 1
MALLETS

NEW COOL SPOT

DEAN SORENSON

SWING ♩ = 120

6 7 8 9 10 11 12 13 14 15 16 17 18 19 20 21 22 23 24 25 26 27 28 29 30 31 32 33 34 35 36 37 38

PART 1

MALLETS - P. 2

SOLO BREAK

41 OPEN FOR SOLOS

39 Fmi 40 Fmi Gmi 42 Ab Gmi

(BACKGROUNDS ON CUE)

mf *fp*

43 Fmi Gmi 44 Ab Gmi 45 Fmi Gmi 46 Ab Gmi

mf

47 1., 2., 3... Fmi Gmi 48 Ab Gmi 49 LAST TIME Fmi Gmi 50 Ab F7

ff

51 52 53 54

55 56 57 58 **59**

mf

60 61 62 63 64 65

66 67 68 69 70